

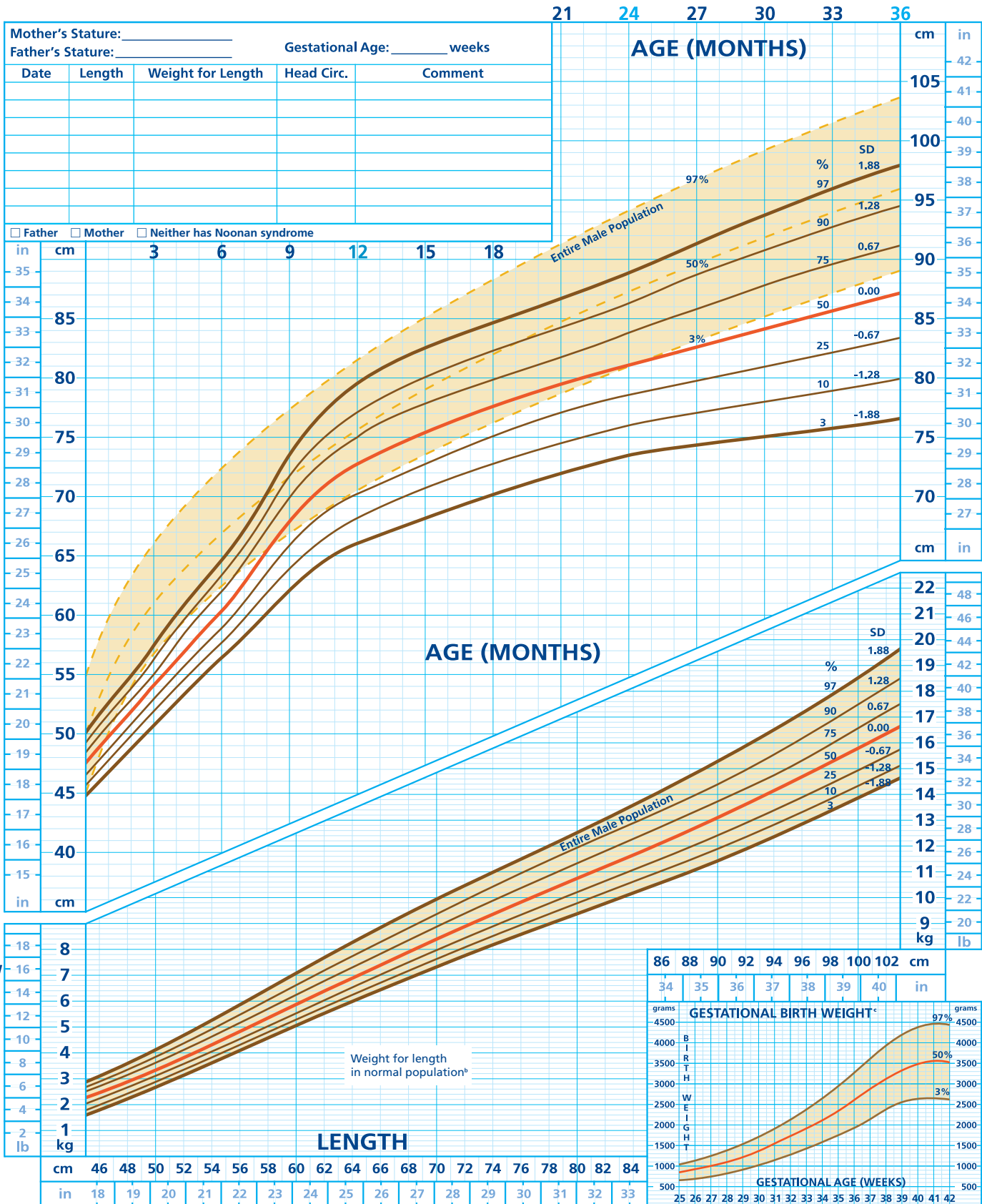
NOONAN SYNDROME BOYS

Birth to 36 Months

Length for Age and Weight for Length^{a,b}

Name: _____

DOB: _____ ID: _____



^aChart and curve selection by Susan Rose, MD, Cincinnati Children's Hospital, University of Cincinnati.
^bThere is no known reference for weight/length ratios in children with Noonan syndrome.
^cGestational birth weight data for patients with Noonan syndrome do not differ from those of the normal population.

Charts created with data from: Ranke, et al. *Eur J Pediatr*. 1988;148(3):220-227; Usher, et al. *J Pediatr*. 1969;74(6): 901-910; Wittr, et al. *Clin Genet*. 1986;30:150-153.

Plot points taken from data available at: <http://www.cdc.gov/nchs/data/nhanes/growthcharts/zscore/lenagent.xls> and <http://www.cdc.gov/nchs/data/nhanes/growthcharts/zscore/wtlenmf.xls>.

Novo Nordisk Inc.
 100 College Road West
 Princeton, New Jersey 08540 U.S.A.
 © 2007 Novo Nordisk Inc.
 132541A June 2007 Printed in the U.S.A.

% = population percentile
 SD = standard deviation

